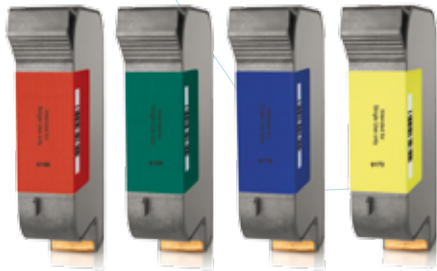


# HSAJET® Printheads

HP TIJ 2.5

The HSAJET® printheads are based on HP Thermal inkjet technology TIJ 2.5



## HSAJET® and HP TIJ 2.5 technology

The HSAJET® printers use HP thermal inkjet technology TIJ 2.5, providing high-resolution printing up to 600 dpi for sharp text, crisp barcodes and intense spot colours.

Versatile and affordable, HP's advanced inkjet technology powers a wide range of industrial and commercial printing applications - from simple text documents to vivid, complex print jobs on many types and sizes of media.

## HSAJET® printheads

The HSAJET® printheads are available in three different versions:

Top - Side - Side/low

The physical dimensions of each version along with cable connector directions provide advantages to each printhead. This facilitates the installation.

The robust stainless steel design meets the demands for production environments.

## HP key-features:

- Cost-effective: No warm-up cycle and no down time
- Easy to use: No special training required to operate and maintain thermal inkjet printers
- Fast: Hundreds of tiny nozzles firing at high frequency allow high-quality printing at high speeds
- Reliable: TIJ is less sensitive to air bubbles in the firing chamber than other printing technologies, avoiding print quality problems and delays caused by trapped air
- Flexible: Supports a wide variety of media
- High quality: TIJ places smaller drops more accurately, producing consistently superb image and text quality
- Environmentally safe: With thermal inkjet, there is no need for service technicians qualified to handle volatile solvents, and no noxious fumes
- Lower cost of ownership: A thermal inkjet printer can cost much less than other printing equipment, reducing the market entry cost



# Technical Details

## PRINTHEADS HP TIJ 2.5

### F-type HSAJET® printheads for new controllers

Every stall in the new printheads has a switch as well as a fuse. These have been added to avoid damage to the printhead if ink-cartridges are being taken out of the stall during print-mode. If a cartridge is taken out, the power to the printhead is cut off.

For controllers like the MiniTouch only the new 'F'-type printheads can be used:



	Top	Side	Side-Low
HPHF1 (½")	•	•	•
HPHF2 (1")	•	•	•
HPHF3 (1½")	•	•	•
HPHF4 (2")	•	•	•

### HSAJET® standard type printheads

The printheads mentioned here can be used in combination with these HSAJET® controllers:  
TCU - TCU int - CU - TIPC - Controller boards



	Top	Side	Side-Low
1-PEN (½")	•	•	•
2-PEN (1")	•	•	•
3-PEN (1½")	•	•	•
4-PEN (2")	•	•	•
6-PEN (3")	•		
CMYK (½-1")	•		

### Accessories:

- BRIDGES & HEADMOUNTS
- PRINTSHOES FOR LEFT OR RIGHT TRAVEL
- BRACKET FOR SENSOR MOUNT ON PRINTHEAD
- HSAJET HP PRINTHEADS WITH 1 TO 4 PENS CAN BE COMBINED AND MOUNTED ON A COMMON FOOTPLATE. THIS ENABLES PRINTHEADS OF 7, 8 OR 9 PENS.

Resolution (DPI)	Max. speed (m/min)
600 x 600	38
600 x 300	76
300 x 300	76
300 x 300 HS	152
300 x 600	38
300 x 150	306

### Technical Data:

Housings: Stainless steel

#### Environmental conditions

Operating temp.: 10 - 50° C

Humidity: 10 - 90%

non-condensing

IP rating: 54

CE compliant



### DEALER:

## RICOCONSULT

Transportbuen 5 • 4700 Næstved  
Phone +45 5553 2910 • Fax +45 5553 2919  
info@ricoconsult.dk • www.ricoconsult.dk



## HSA SYSTEMS

HSA Systems Denmark

DK-2740 SKOVLUNDE | +45 4494 0222 || DK-5260 ODENSE S | +45 6610 3401

HSA Systems France

F-93160 NOISY-LE-GRAND | +33 1 4815 5050

www.hsasystems.com | mail@hsasystems.com