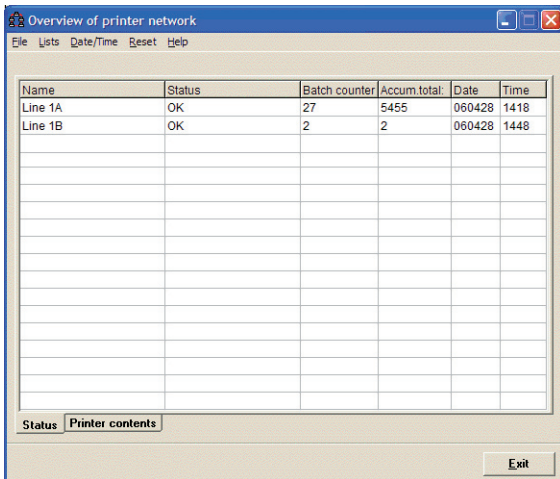


Apart from MecWin Label Design Program - we can offer a range of other software packages. Depending on how you want to print a label you can use Network, Operator, External or Labeller.

Network

With Network, you select label from a TG300 with:

- Labels stored on server
- Layouts stored on server using CSV database

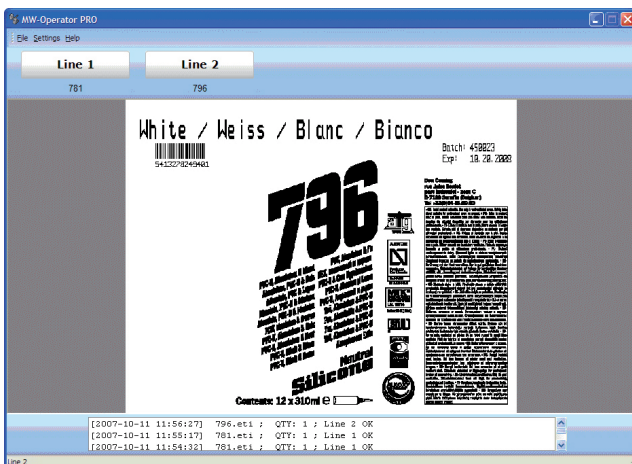


A typical operator interface with two printers

Operator

Operator is used when you select labels from a PC:

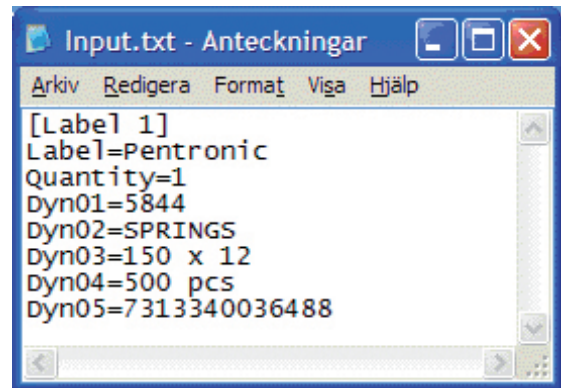
- With operator strings
- With prompted start number for counter
- To more than one printer at the same time
- To save labels with storage no. 1-7
- For PC printer with SSCC number



A typical operator interface with two buttons

External

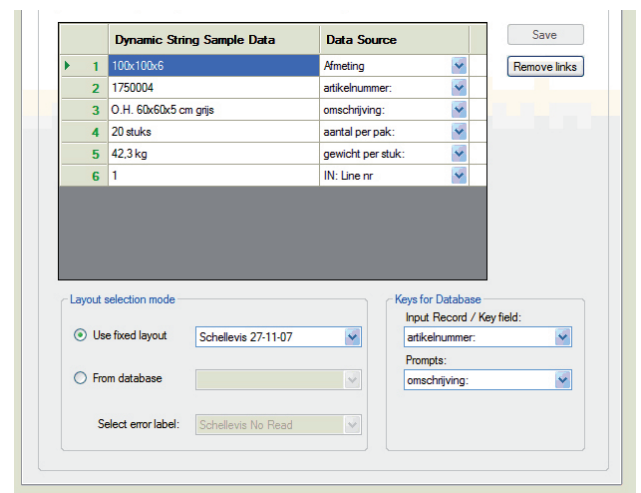
External is used when you select label from external software by creating a small text file.



A typical input file in ANSI format

Labeller

MW-Labeller get an input string on one of the two needed serial communication ports (from barcode reader, PLC, main-frame computer etc).



Operating Systems: Windows 2000, XP & Vista

Manufactured by:

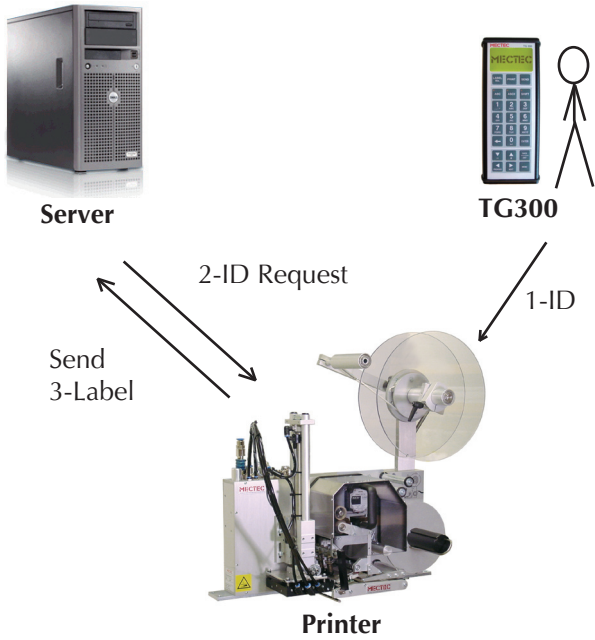
Mectec Elektronik AB
 Agnesfridsvägen 189, SE-213 75 Malmö, Sweden
 P: +46 40 689 25 00 • F: +46 40 689 25 25
 info@mectec.se • www.mectec.com

Distributed by:

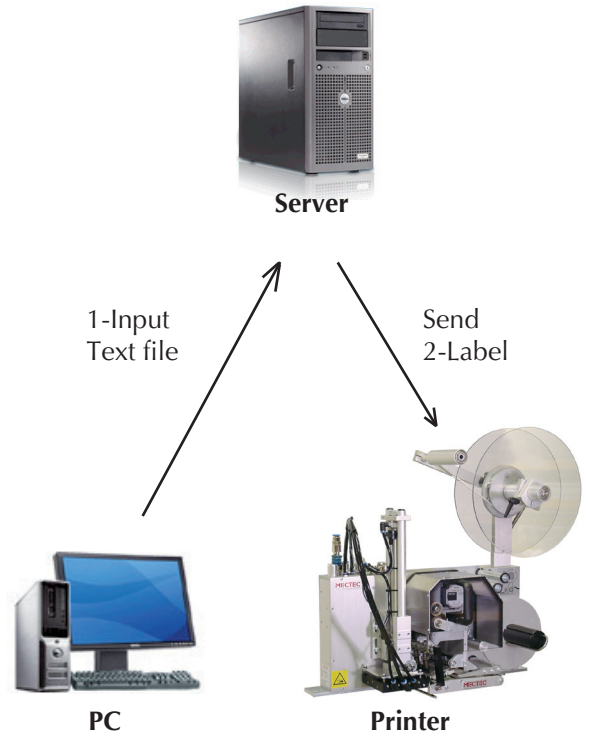
RICO CONSULT
 Transportbuen 5, DK - 4700 Næstved
 Tel. +45 55 53 29 10, Fax + 45 55 53 29 19
 info@ricoconsult.dk, www.ricoconsult.dk

Principles of Operation

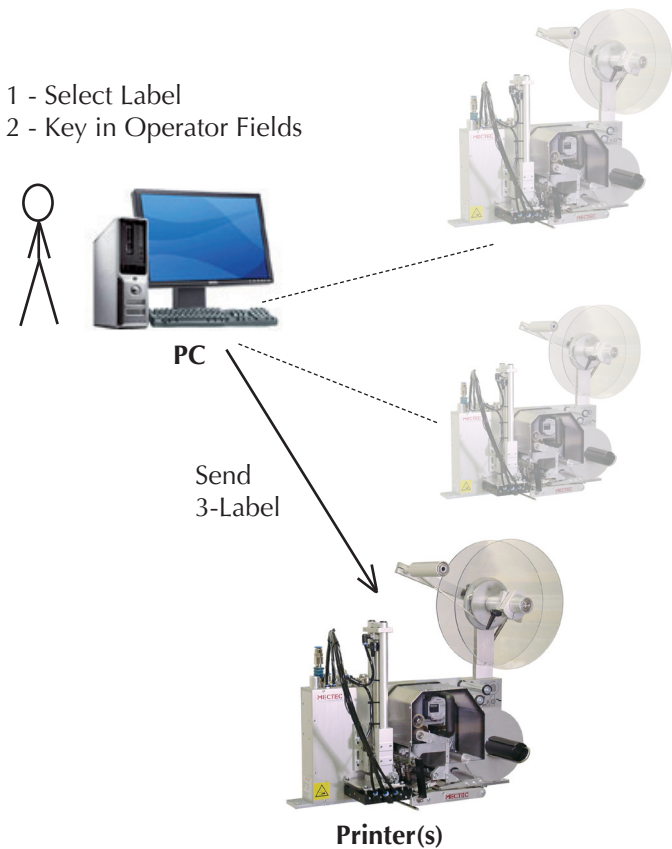
Network



External



Operator



Labeller

