

**THERMO
SCRIBE®**

Thermoscribe is our registered trademark, and comprises in-line specific, CE marked, Direct Thermal printers and Thermal Transfer printers. Our products and system solutions are used by companies in all lines of business throughout the world.

The picture shows a right-hand version of our thermal transfer printer T60 with the pick and place applicator A272. This applicator can apply labels on top, side or bottom of a product.

THERMOSCRIBE T60

Thermal Transfer printer T60 with applicator for use on all packaging lines

The ThermoScribe T60 with applicator prints and applies labels at high speed, with great precision and reliability.

The T60 has been developed for in-line use in demanding environments and to cope with multiple shift working.

Our broad range of applicators makes it possible to find the optimum solutions to your labelling problems – in every case.

The system is easy to integrate in production, and together with our computer programs for control and label design, you can change information quickly. The label information is stored in the printer and can be easily adapted to the product.

- The T60 is designed for in-line use
- Applicators for all types of products
- Easy to integrate in production
- Prints and applies at high speed
- Available in right and left versions
- Highly reliable
- CE-marked equipment

MECTEC

RICO CONSULT

Transportbuen 5, DK - 4700 Næstved
Tel. +45 55 53 29 10, Fax + 45 55 53 29 19
post@ricoconsult.dk, www.ricoconsult.dk

The printer

The Thermoscribe T60 is a thermal transfer printer developed and manufactured by Mectec in Sweden. It is designed for in-line use, and the modular structure makes it easy to customize. With its robust design, the T60 is perfectly suited to an industrial setting. Since the T60 along with the applicator is so compact, the Print and Apply unit requires less space than most conventional labelling machines, and the separate control unit can easily be placed in any suitable location. Since the printer is available in both right and left versions, the optimum assembly can always be achieved, as regards both functioning and service.

The applicator

The applicators, which have a modular design and are often customized, solve virtually all labelling problems regardless of the shape, surface or consistency of the product. It makes no difference whether labels have to be applied to the side, the front, or round the corner: there is always a Thermoscribe applicator which can do the job properly.

The microprocessor-controlled applicators are designed to be integrated mechanically and electrically with Thermoscribe thermal printers. This gives superior reliability and quick labelling. It goes without saying that the applicator applies the last printed label.

The software

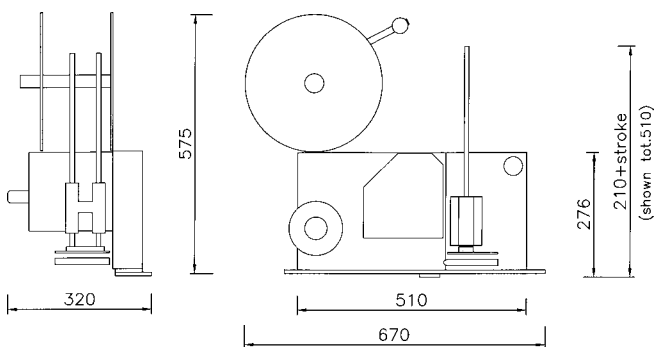
The user-friendly software enables maximum utilization of the hardware. Our Windows-based label program MecWin makes it easy to put the right information on the labels. With simple commands you can add text, graphics, bar codes, etc. Both True Type fonts and the printer's resident fonts are easy to use to create attractive and functional labels.

Communication

No system is complete without well-functioning communication between the operator and the machine. With the hand held terminal TG100 you can control the printer without it being connected to a PC. If you still want to connect a PC to the printer, this can be done. It is also possible to install a network with up to 31 printers.

For control via a PC, easy-to-use operator programs are available, in both customized and standard versions.

Variable data for printing on the labels can also be retrieved from a host computer. The choice is yours.



Technical data Thermoscribe T60

Printer dimensions: (inclusive 305 mm diameter label reel)	width 320 mm length 670 mm height 575 mm
Weight, printer:	17 kg
PCU-ACC:	12 kg
Printer types:	Available in right or left version.
Mains power supply:	230 volt $\pm 10\%$ 50Hz 115 volt $\pm 10\%$ 60Hz
Environment:	Operating temperature -5°C to $+40^{\circ}\text{C}$ 20% to 85% non-condensing relative humidity
Label sizes:	Min 10 x 15 mm (w x l) Max print area (6 dot) 57 876 mm ² e.g. 106 x 546 mm (8 dot) 32 768 mm ² e.g. 104 x 315 mm (8 dot) 32 768 mm ² e.g. 160 x 204 mm Max web width 170 mm
Reel diameter:	305 mm Option: 250 mm
Label core diameter:	39 mm alt. 76 mm
Transfer ribbon reel:	Max 450 metres.
Fonts:	3 internal printer fonts that can be magnified in both width and height. The following character sizes can be obtained: 1.1-74 mm (ÅÄÖ 85), 6 dots/mm 0.9-56 mm (ÅÄÖ 64), 8 dots/mm. True Type fonts can be downloaded as bitmaps from a PC.
Bar codes:	EAN8, EAN13, EAN128, Code 39, DUN14, Code 128, UPC-A, UPC-E, 2 of 5 interleaved in different sizes. Other bar codes on request.
Text rotation:	0°, 90°, 180°, 270°
Special function:	To be able to begin printing on the leading edge of a new label it is possible to reverse the label.
Label dispensing:	Dispensed. Attached to the backing paper. Reel to reel printing.
Printheads:	106 mm (6 dots/mm) 104 mm (8 dots/mm) 160 mm (8 dots/mm)
Print speed:	Up to 125 mm/sec. (6 dots/mm) Up to 175 mm/sec. (8 dots/mm)
Internal memory:	504 kB RAM, 8 kB EEPROM 64 kB EPROM
Interface:	RS 232C, RS 485
Baud rate:	1200, 2400, 4800, 9600, 19200
Standard functions:	Real time clock, Graphics, Line draw, Sequential numbers, 10 bar codes/layout, Negative text, Pricing programme, Dynamic strings.
Accessories:	TG100, Alphanumeric keyboard Net work Low level warning (labels and/or ribbons) Queue system Software to communicate with weighing machine Customized software Software to communicate with bar code reader.

Mectec AB reserve the right to alter design and specifications without prior notification. 12.97

MECTEC

Technical know-how and quality in one word

Member of
AIM SWEDEN

MECTEC ELEKTRONIK AB

MALMÖ Head office
Singelgatan 7
S-212 28 Malmö, Sweden
Tel +46 40 18 81 90, fax +46 40 18 72 50

GÖTEBORG Sales office
Grafiska vägen 32
S-412 63 Göteborg, Sweden
Tel +46 31 703 48 80, fax +46 31 703 48 81
Internet: <http://www.mectec.se>

STOCKHOLM Sales office
Vinkelvägen 8
S-191 43 Sollentuna, Sweden
Tel +46 8 35 90 46, fax +46 8 35 90 71